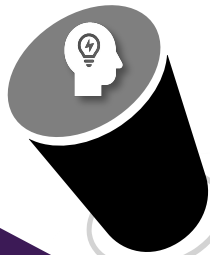


# TPS Vision of a Graduate



## Critical Thinking & Problem Solving

*The ability to use knowledge, facts, and data to effectively solve problems.*



## Innovation

*The ability to look at something familiar and see new possibilities, which leads to curiosity about new learning and the desire to create something original or imaginative.*

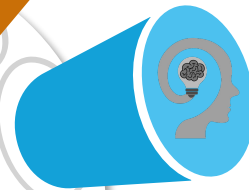
## Communication

*The ability to understand others and be understood for a variety of reasons and purposes.*



## Growth Mindset

*The belief that one can improve their intelligence or skills through continued hard work and adapt when faced with challenges.*



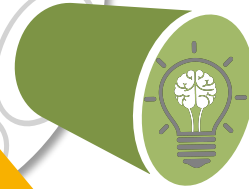
## Collaboration

*The qualities and competencies we use to collectively make progress toward common goals or outcomes.*



## Emotional Intelligence

*The aptitude for identifying how and why a person is feeling the way they are and how to regulate and address those emotions.*



## Self-Efficacy

*The belief that you are capable of successfully performing a task or managing a situation.*



## Integrity

*The act of consistently doing the right thing even when it's hard or no one is looking.*

